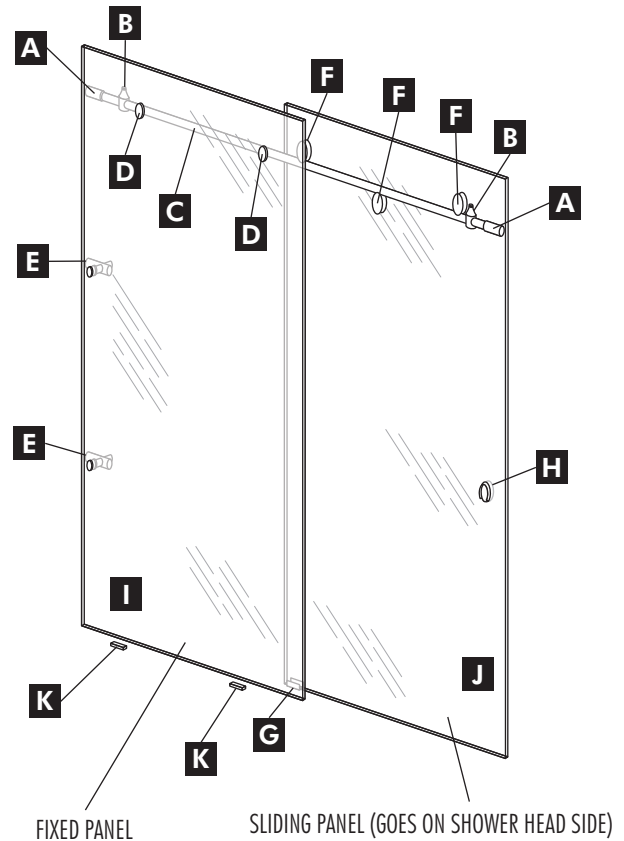




## SKYLINE SERIES ENCLOSURE

### PARTS LIST

ITEM	PART#	DESCRIPTION	QTY
<b>A</b>	73-11A	Connector Bracket	2
<b>B</b>	503F	Door Stops	2
<b>C</b>	19MM	Support Bar	1
<b>D</b>	502G1	Panel Glass Bracket	2
<b>E</b>	512A	Wall Mount Bracket	2
<b>F</b>	501E1	Rollers	3
<b>G</b>	505S	Center Guide	1
<b>H</b>	50H	Recessed Finger Pull	1
<b>I</b>		Fixed Panel (3/8" Clear Glass)	1
<b>J</b>		Rolling Panel (3/8" Clear Glass)	1
<b>K</b>		Glass Block	2



## STEP 1

Using the centerline of tub/shower base as a starting point, come down 3" from overall height of shower and drill holes on both walls for bar attachment. If you're drilling into wood, use a 3/16" drill bit. If using the anchors, use a 1/4" drill bit. If your tub has outages, and you're measuring up from the tub or shower base, make sure to allow for your outages so the bar will be completely level when installed.

Place anchor in hole (if needed) and silicone in hole. The connector bracket (Part number 73-11A) consists of two parts, a tubular sleeve and a wall-mount puck. Using your allen key remove your wall mount puck located inside the tubular sleeve. Attach wall mount pucks using 1-1/2" screws provided. **See figure 1.** Tighten screw down inside puck. Make sure the slot in the puck is vertical to allow for some leveling adjustment.



FIGURE 1

## STEP 2

Slide door stops (Part number 503F) a few inches down onto each end of the bar and use a small amount of tape to hold it in place so it won't slide off during installation of the rod. **See figure 2.**



FIGURE 2

**STEP 3**

Slide tubular parts of connector brackets (Part number 73-11A) onto each end of bar. **See figure 3.**



**FIGURE 3**

**STEP 4**

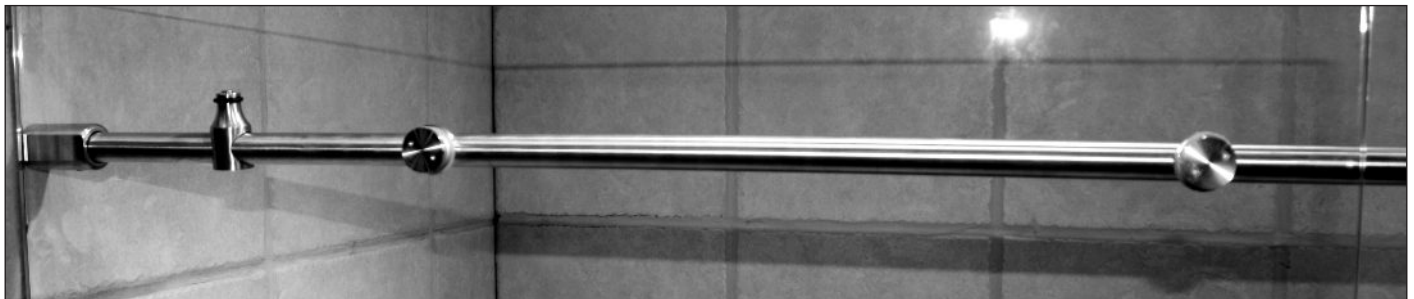
Place bar in-line with mounted wall pucks and slide connector brackets over puck. Ensure that the flat spot of the connector bracket is facing towards glass side. Tighten set screws on top and bottom of connector bracket to secure the bar. **See figure 4.**



**FIGURE 4**

**STEP 5**

Install the two panel glass bracket (Part number 502G1) on bar securely using allen key. Set panel glass on glass blocks and loosely attach with brackets to bar. **See figure 5.** This is to accurately mark the holes for drilling.



**FIGURE 5**

**STEP 6**

Ensure panel glass is level and plumb before marking holes for the two wall mount brackets (Part number 512A). **See figure 6** for marking holes for wall mount bracket, caps have been removed in this figure.

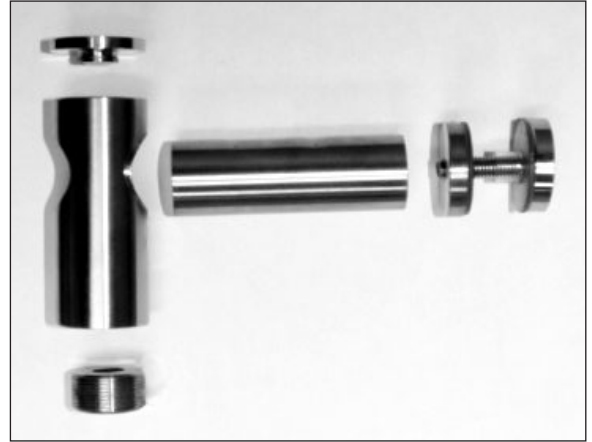
**Note:** part has adjustment if required.

After marking holes remove puck from the inside of the wall mount bracket.



**FIGURE 6**

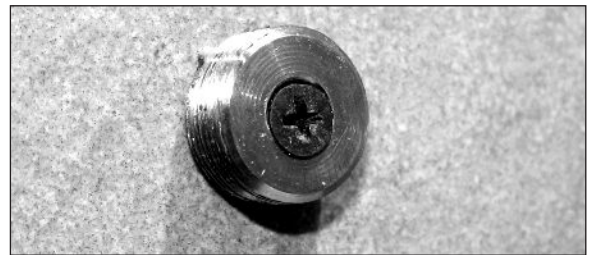
Wall mount bracket (Part number 512A) shown disassembled in **figure 7**. The wall mount bracket is adjustable. If your drill can be used without touching the glass, you do not need to remove the panel to install the wall mount brackets.



**FIGURE 7**

**STEP 7**

Drill a hole in the center of your mark. If you're drilling into wood, use a 3/16" drill bit. If using the anchors, use a 1/4" drill bit. Place silicone and anchor into hole and install puck. **See figure 8.**



**FIGURE 8**

**STEP 8**

Thread wall mount bracket onto puck. **See figure 9.**



**FIGURE 9**

**STEP 9**

Make any necessary adjustments to the wall mount bracket and tighten set screw with allen key. **See figure 10.**



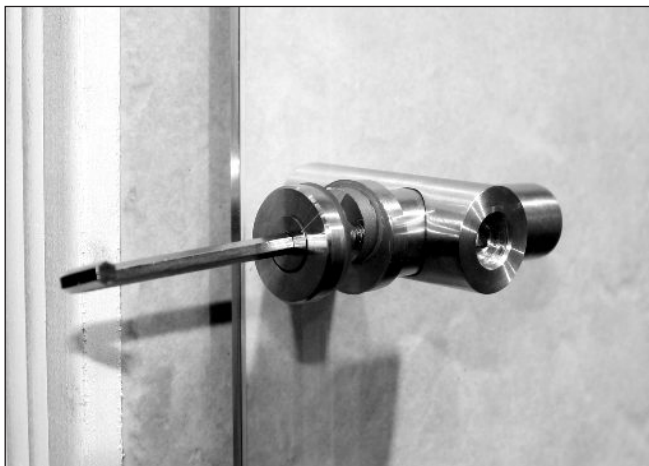
**FIGURE 10**

**STEP 10**

Reinstall glass panel on glass blocks and secure wall mount brackets (Part number 512A). **See figures 11, 12 and 13.**



**FIGURE 11**



**FIGURE 12**



**FIGURE 13**

**STEP 11**

Attach glass panel to the panel glass brackets (Part number 502G1) and use provided spanner wrench to secure. **See figure 14.**



**FIGURE 14**

**STEP 12**

Install two part number 501E1 (qty. 3) rollers into top 2 holes of door panel. Using provided CRL SOW wrench and spanner wrench to tighten roller to door glass. See Figure 15, 16 and 17.



**FIGURE 15**



**FIGURE 16**



**FIGURE 17**

**STEP 13**

Carefully set door glass on bar for purposes of marking for center guide only. Hold glass plumb and mark both holes and install center guide (Part number 505S). **See figure 18.** It is important to put silicone in screw holes and properly silicone guide itself to avoid leaking.

**NOTE: Guide has two settings. Use tighter setting for 3/8" glass.**

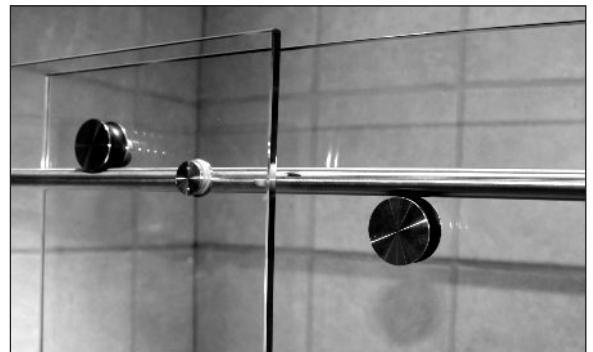


**FIGURE 18**

**STEP 14**

Hang door on rail and install bottom roller loosely as in previous step for top rollers. **See figure 19.**

**NOTE: If having issues getting bottom roller installed see next step for cam system adjustment to allow extra clearance.**



**FIGURE 19**

**STEP 15**

Notice there is a cam system installed in the rollers that will allow adjustment for small outages. Using level adjust top rollers with provided spanner wrench and then snug bottom roller to rail to ensure the door glass will not come off track. **See figure 20.**



**FIGURE 20**

**STEP 16**

**IMPORTANT: GLASS STOPS MUST BE ADJUSTED PROPERLY TO KEEP GLASS FROM STRIKING WALL AND/OR WALL CONNECTORS AND BREAKING.**

Adjust glass stops (Part number 503F) for required stopping distance for glass door. **See figure 21.**



**FIGURE 21**

**STEP 17**

Install recessed finger pull (Part number 50H) using gaskets provided. **See figure 22.**

**Note:** The recessed pull consists of five pieces. When mounting, try to center the threaded middle section between the two end rings.



**FIGURE 22**

**STEP 18 (Optional)**

Polycarbonate is provided as an option for the edge of the door to help seal against wall.

**STEP 19 (Optional)**

Silicone the inside and outside of the stationary panel, both wall and curb.